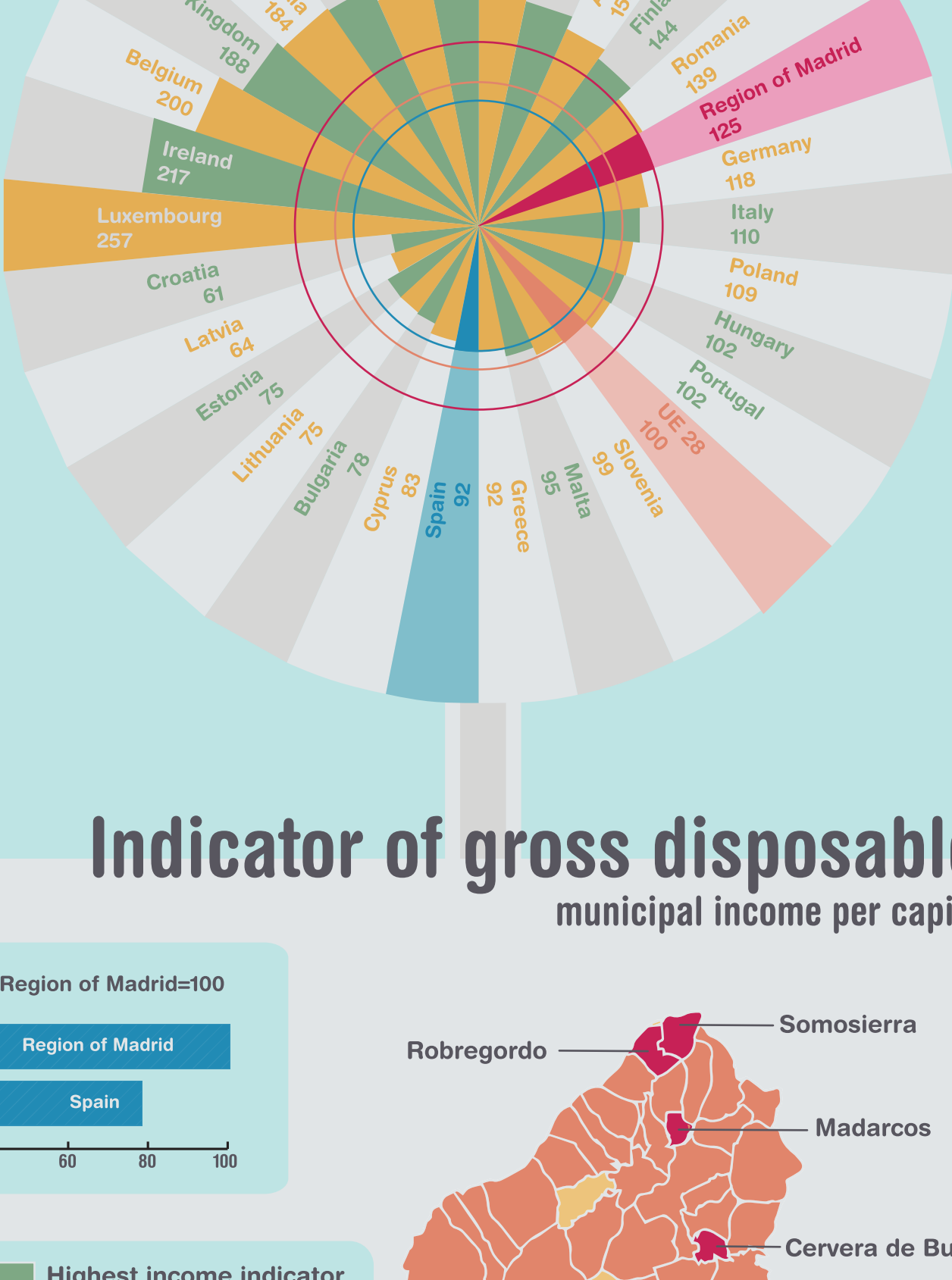


Region of Madrid

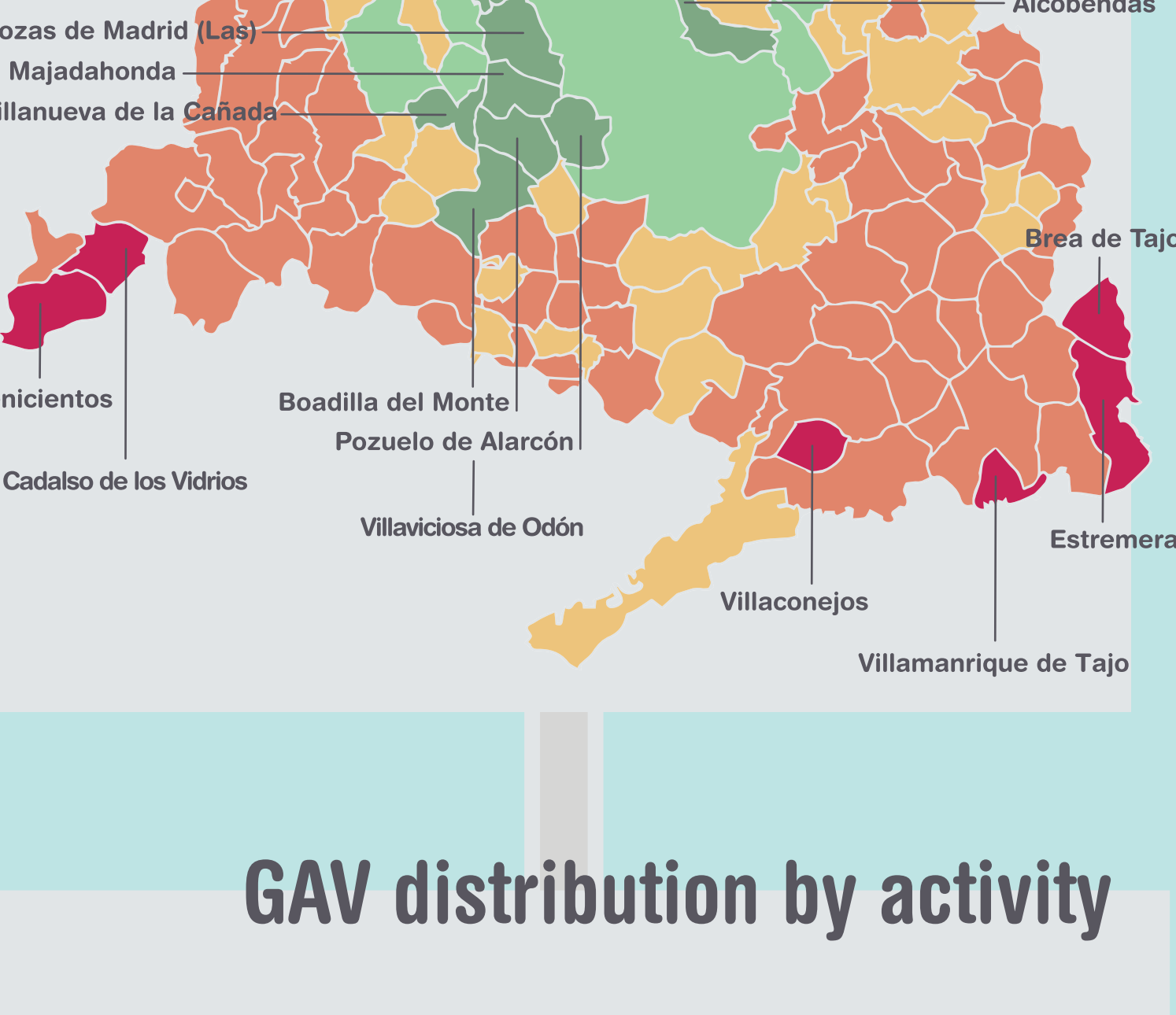
MADRID'S ECONOMIC OUTLOOK 2018

GDP per cápita

in PPS UE28=100
Each country represents the European region containing the capital city.



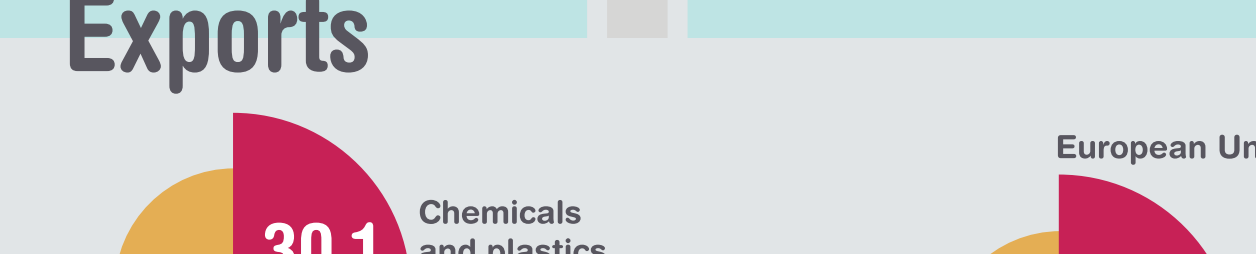
Indicator of gross disposable municipal income per capita



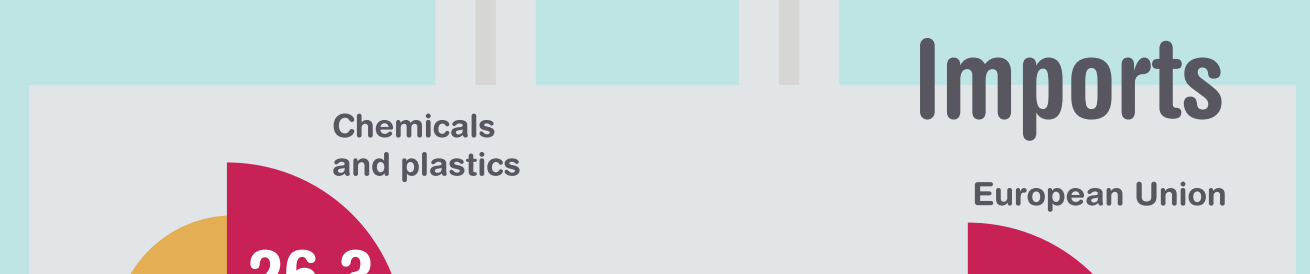
GAV distribution by activity



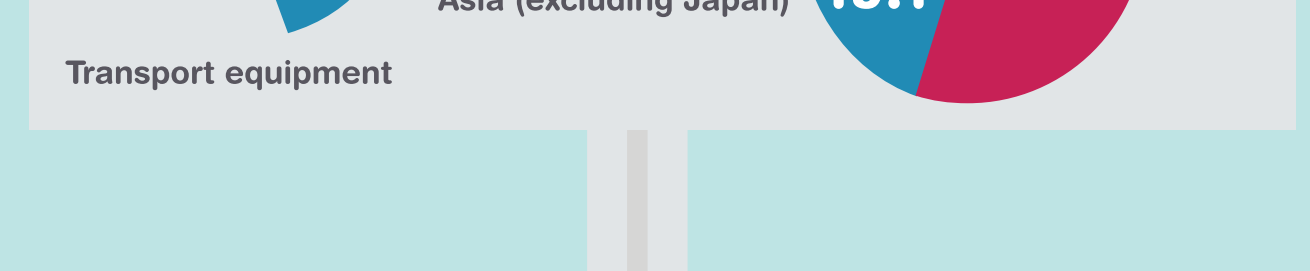
Predominance of the service sector



Exports



Imports



Business units

	Region of Madrid	Spain
Total	187,835	1,365,658
Born in the year	30,776	251,358
Over 250 employees	1,214	5,501

Madrid-based companies have a life expectancy at birth of 8.82 years, although their life expectancy reaches 17.15 years if the company remains in business for ten years.

Madrid Metro Network

is the second largest in Western Europe, only exceeded by the London Underground system, and followed by the Paris Metro

Road network (km)

HIGH CAPACITY ROADS		REST OF THE NETWORK	
Total	979	Total	2,339
Toll motorways	161	Less than 5m wide	67
Toll-free motorways & highways	610	5 to 7m wide	812
Dual carriageways	209	More than 7m wide	1,460

Profile of average affiliated person

Sex

Male 52.1%

Age

40 to 44 years old 16.0%

Nacionality

Spanish 86.7%

Workplace

Firms with more than 250 workers 34.9%

Firm's branch of activity

Financial and business services 31.6%

Type of contract

Permanent contract 66.0%

Type of working day

Full time 67.2%

Contribution group

Engineers and university graduates 16.7%

Activity rate



Employment rate



The percentage of households with all active members employed is 81.7% (Spain 77.9%).

Unemployment rate



The percentage of households with all active members unemployed is 6.0% (Spain 8.3%).

Distribution of household expenditure (Distribution of household expenditure)

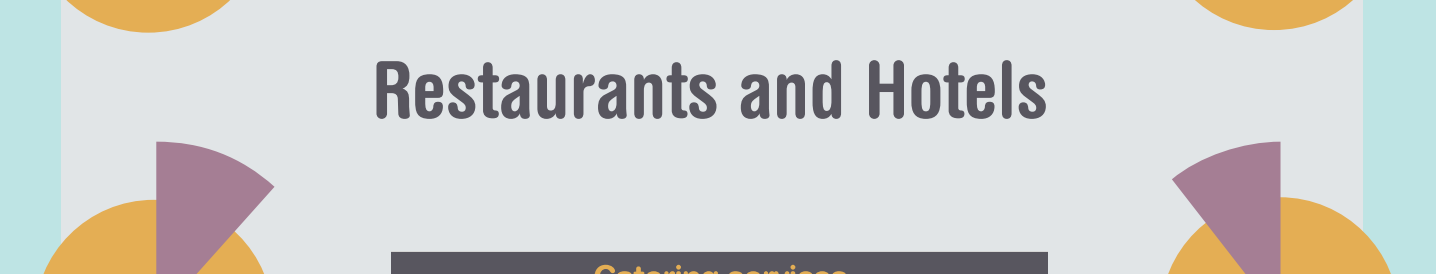
Housing, water, electricity and fuels



Transport



Food and non-alcoholic beverages



Restaurants and Hotels



Comunidad de Madrid